

TH 13 Corridor Study Update



Your Destination...Our Priority



TH 13 Corridor Study Update

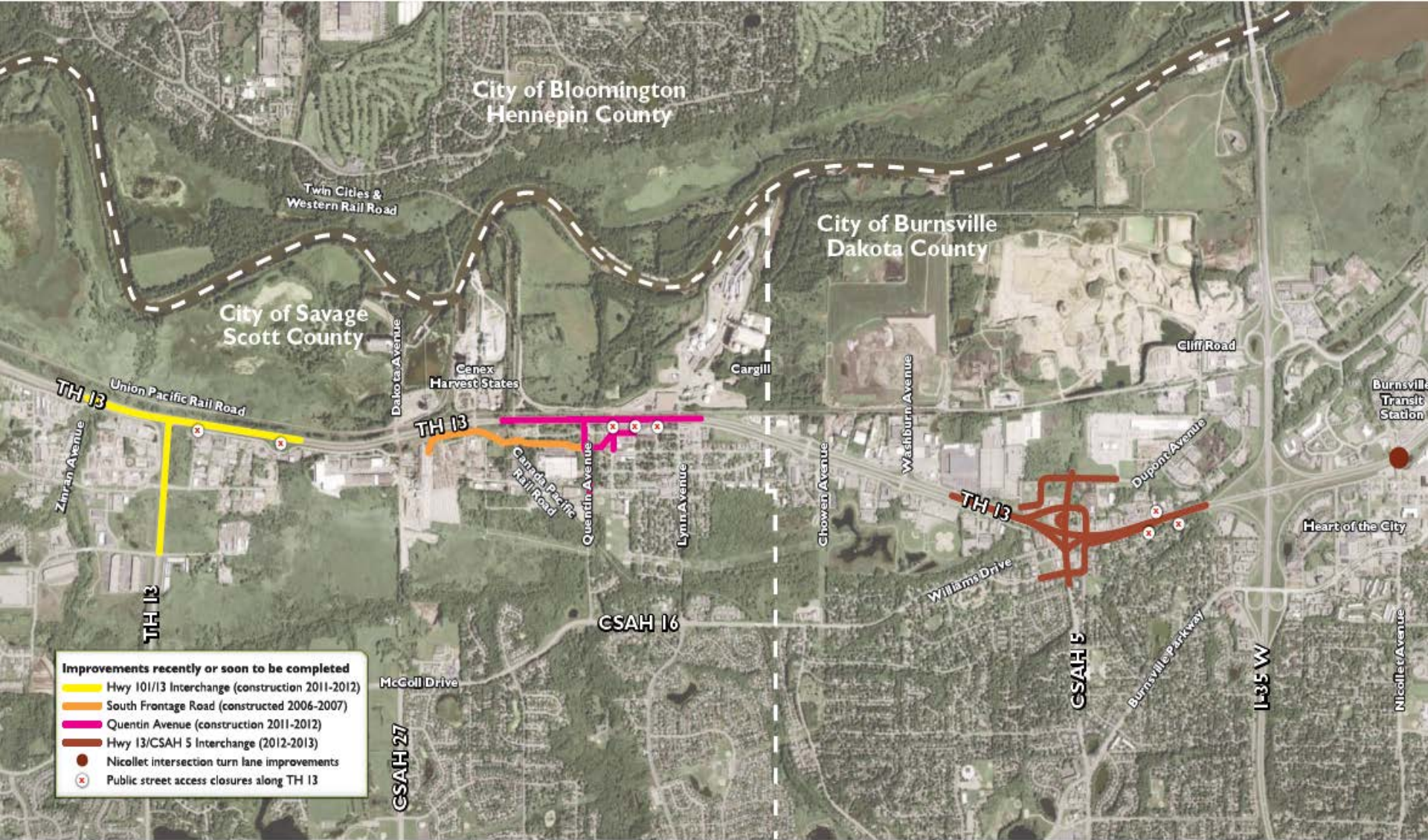
- ▶ Joint powers agreement with Savage, Burnsville, Dakota County, Scott County & MnDOT
- ▶ Previous study completed in 2000
- ▶ Update guidance for transportation improvements along TH 13 through Savage & western Burnsville



The study corridor

- ▶ TH 13 is a critical east–west transportation corridor that connects 2 major river crossings
- ▶ Serves local residents, businesses, & transit, and is an interregional commerce route carrying high volumes of freight traffic
- ▶ Recent transportation investments on the corridor





Highway 13

Recent Corridor Activities



Study purpose

- ▶ The study will identify investment needs and show how they:
 - ▶ Address system performance on TH 13
 - ▶ Improve the safety of the corridor for motorists & pedestrians
 - ▶ Support local economic & community development along TH 13



Study goals:

- ▶ Identify alternatives to improve mobility of vehicular transportation & freight operations
- ▶ Identify alternatives that improve safety for vehicular transportation & freight operations
- ▶ Identify alternatives to supply adequate access to businesses
- ▶ Identify options to improve the multimodal transportation system
- ▶ Create a practical plan



Key elements of the study:

- ▶ Stakeholder & public involvement
- ▶ Review existing studies & plans relevant to the transportation needs of Highway 13
- ▶ Traffic analysis given the recent transportation investments
- ▶ Opportunities & constraints of the UP Railroad & associated crossings & rail safety/mobility considerations
- ▶ Multimodal planning
- ▶ Potential design alternatives & analysis



TH 13 Corridor Study Update

- ▶ The concept alternatives for the corridor will focus on low cost/high benefit solutions that target mitigation of the highest risk areas addressing safety & mobility of passenger vehicles, transit, heavy truck movements & pedestrians/bicyclists



TH 13 Corridor Study Update

Project website:

<http://www.dot.state.mn.us/metro/projects/hwy13study>

For More Information:

Molly McCartney

Metro District Planning

651-234-7789

molly.mccartney@state.mn.us

